



# Fabrics 2023

These are our new fabrics and materials available from 1 January 2023.

## *The Organics*

*Plant-based materials from Africa. Elegantly woven fibres that give rise to magnificent compositions. The most beautiful creations come from Madagascar.*

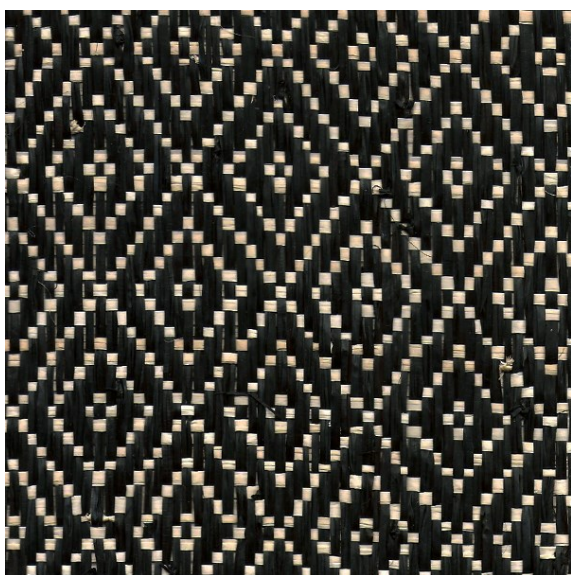
*These materials give the lampshades a natural and very warm appearance.*



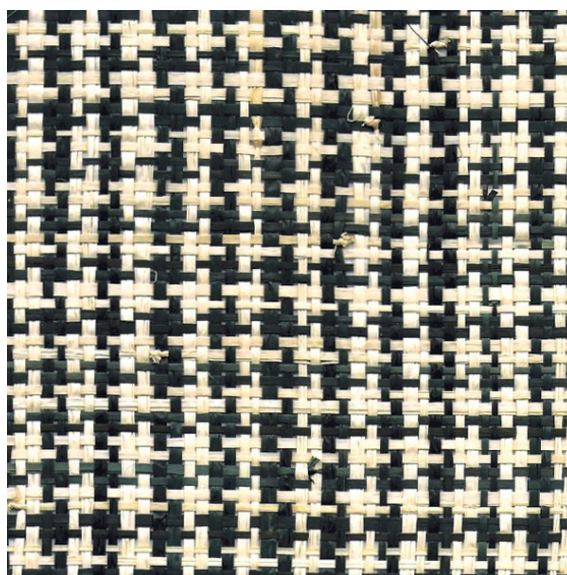
Jacinthe Naturelle Code no 991 - Category 5



Jacinthe Miel Noir Code no 990 - Category 5

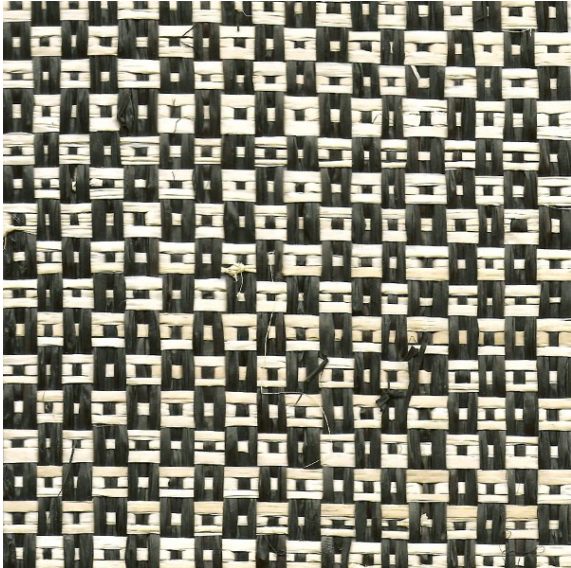


Palmier Losanges Code no 996 - Category 5



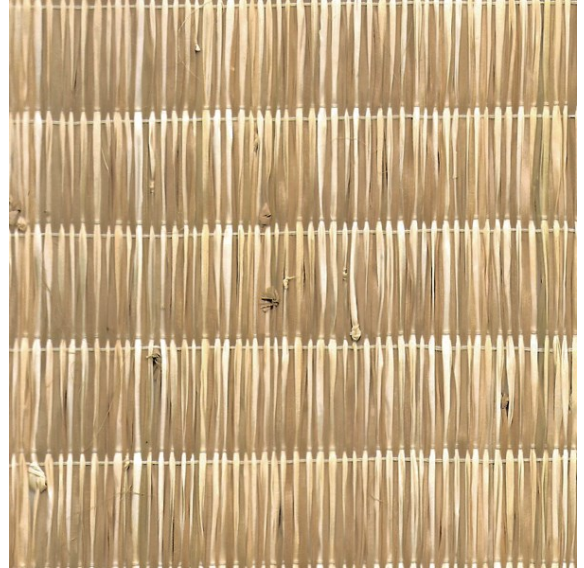
Palmier Pied de poule Code no 995 - Category 5





Palmier Polka

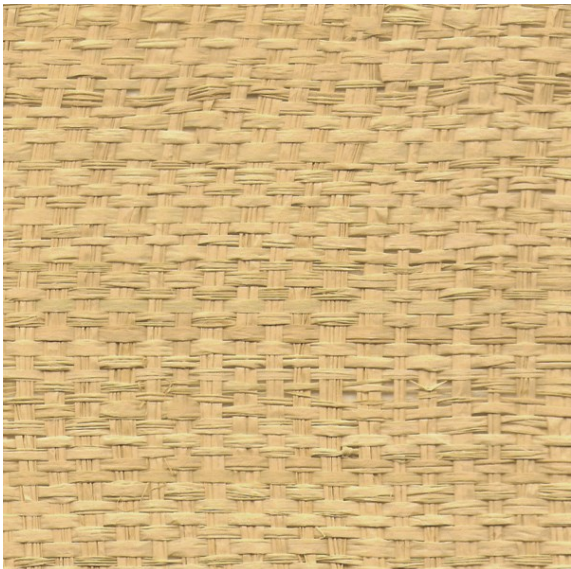
Code no 997 - Category 5



Palmier Ecailles

Code no 998 - Offer out of Category

*Prices and availability only on request.*



Raphia Nature

Code no 841 - Category 3



Raphia Banane

Code no 840 - Category 3



# The Audacious

*Exceptional fabrics: TILIA are Jacquard woven and over-embroidered, FERRO has a wave weave and BASOO are a high quality velvet.*

*Magnificent in their structures and exceptional patterns, they surprise with their beauty and colors, they confer to the lampshades beautiful transparencies and an AUDACIOUS presence in your decoration.*



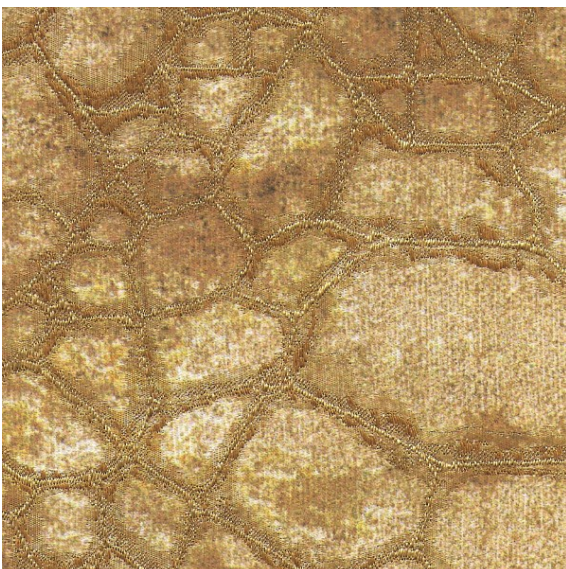
Tilia Gravière

Code no 993 - Category 5



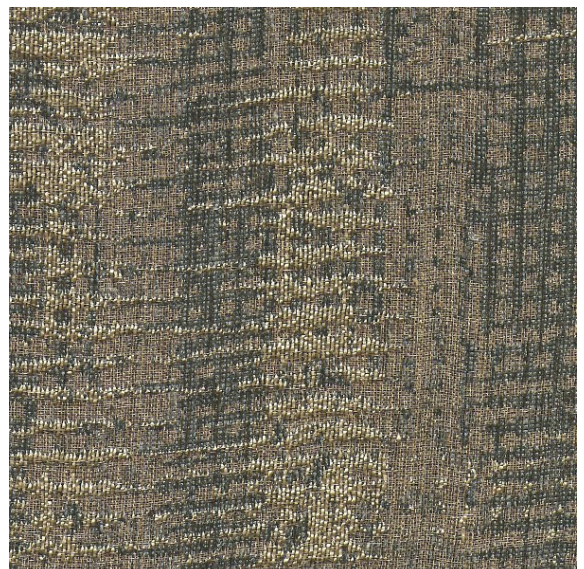
Tilia Starry blue

Code no 992 - Category 5



Tilia Amadou

Code no 994 - Category 5



Wilg Wengé

Code no 804 - Category 3





Ferro Doro

Code no 920 - Category 4



Ferro Madré

Code no 904- Category 4



Basoo Bagheera

Code no 988 - Category 5



Basoo Zebra

Code no 989 - Category 5





# The Elegants

*We have selected four new ranges of fabrics according to precise criteria.*

*Appearance, quality, elegance and transparency.*

*Each fabric we have selected is of high quality, refined and will bring elegance and class to your interior. Moreover, all these fabrics have been chosen for their transparency in order to give an exceptional luminosity to your lights.*



Arrow Akagera

Code no 908 - Category 4



Arrow Safari

Code no 909 - Category 4



Arrow Casamance

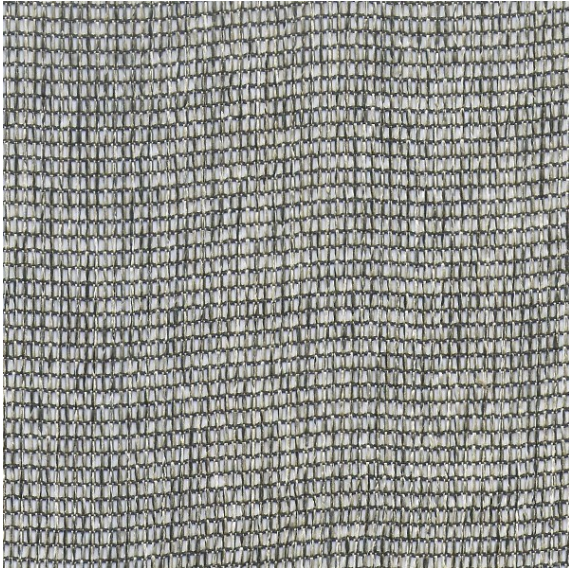
Code no 921- Category 4



Esmaria Avoine

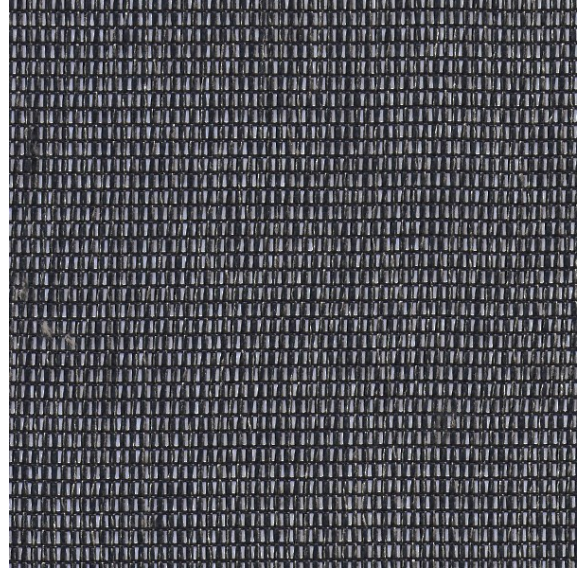
Code no 802 - Category 3





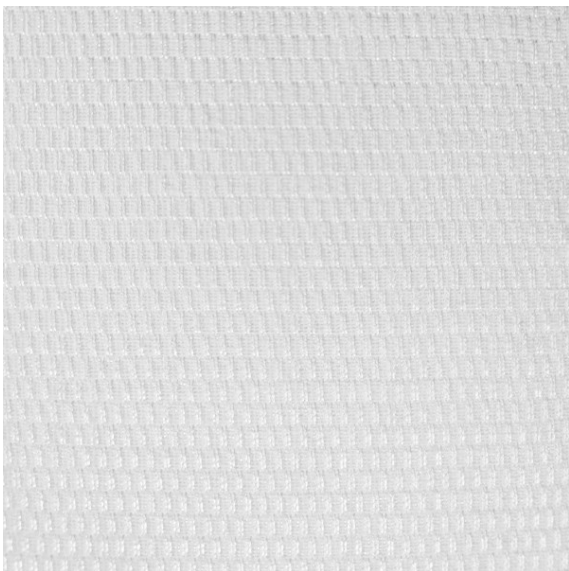
Esmaria Seigle

Code no 803 - Category 3



Esmaria Nigelle

Code no 807 - Category 3



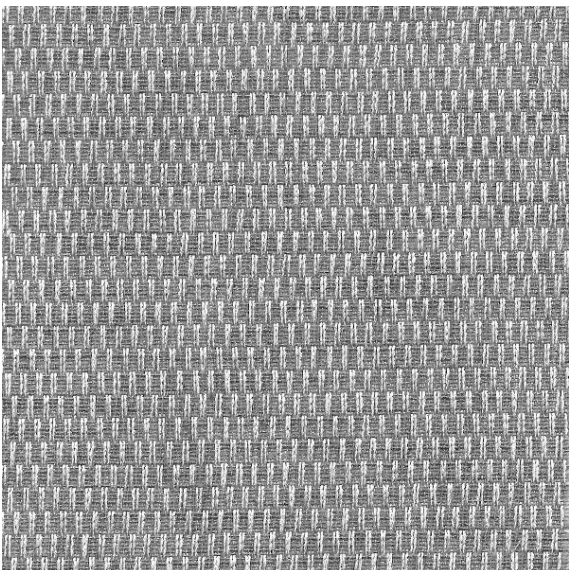
Parma Givre

Code no 907 - Category 4



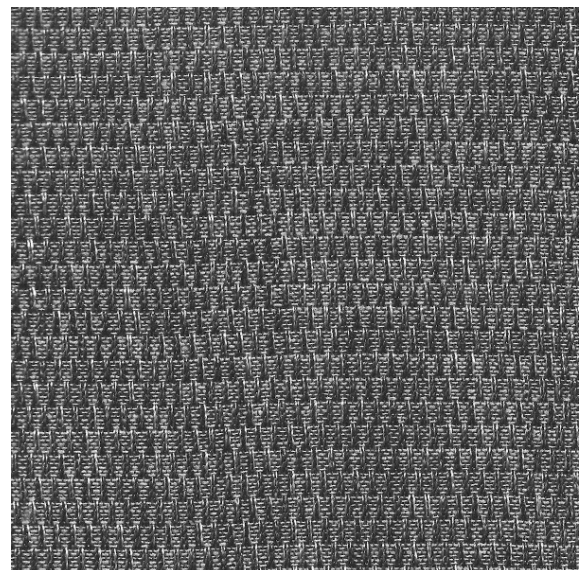
Parma Merisier

Code no 906 - Category 4



Parma Cendré

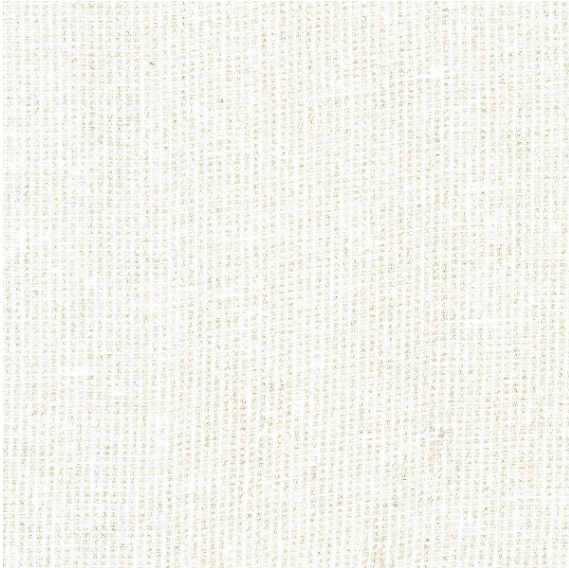
Code no 924 - Category 4



Parma Réglisse

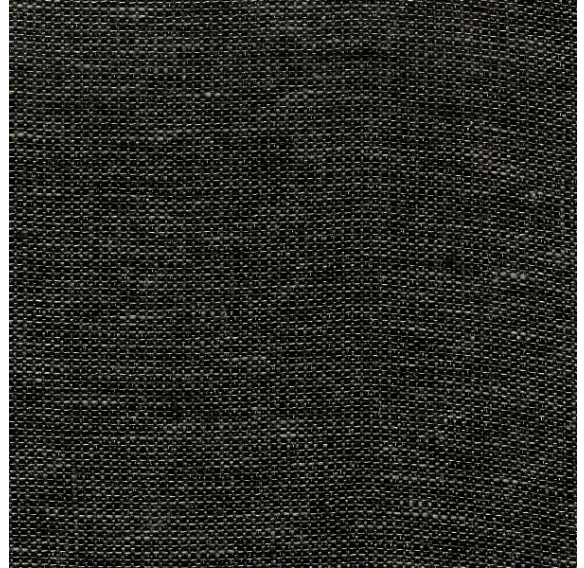
Code no 923 - Category 4





Stone Kaolin

Code no 925 - Category 4



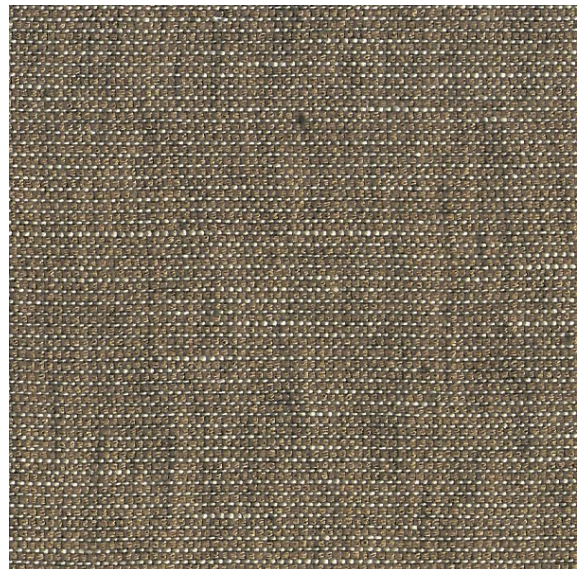
Stone Diorite

Code no 901 - Category 4



Stone Calcite

Code no 969 - Category 4



Stone Granit

Code no 927- Category 4